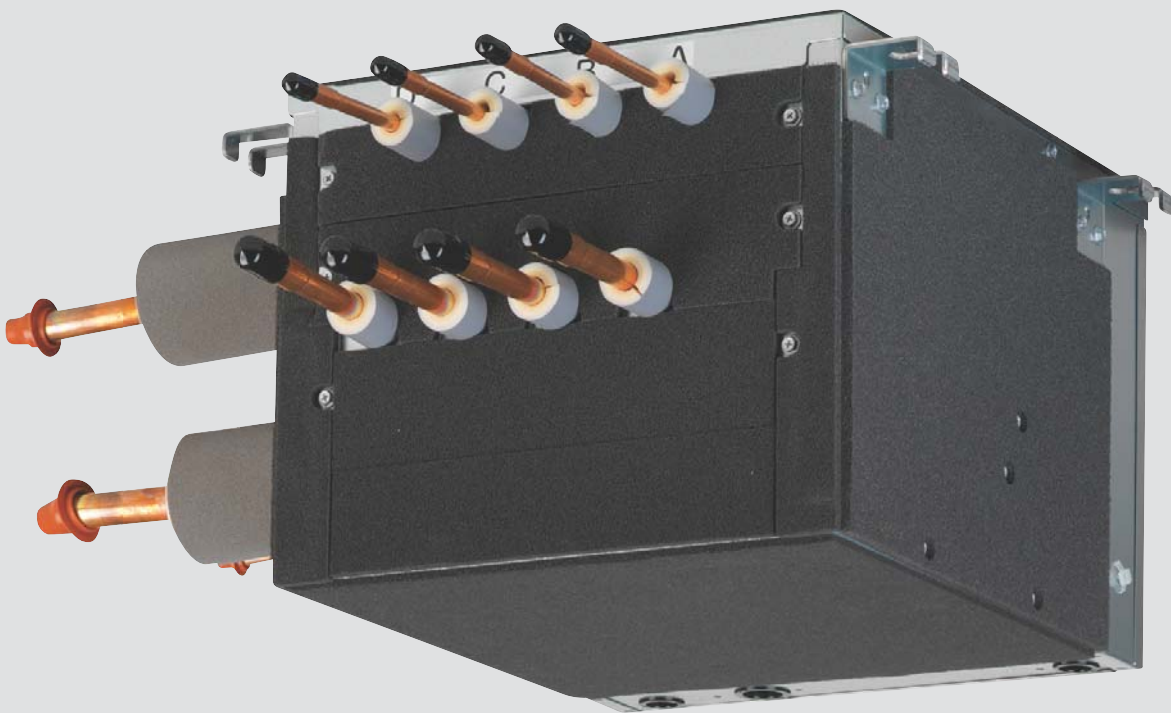


Options and Accessories
Technical Data

BS-Q14AV1B



- > BS4Q14AV1B
- > BS6Q14AV1B
- > BS8Q14AV1B
- > BS10Q14AV1B
- > BS12Q14AV1B
- > BS16Q14AV1B

TABLE OF CONTENTS

BS-Q14AV1B

1	Features	2
2	Specifications	3
	Technical Specifications	3
	Electrical Specifications	3
3	Safety device settings.....	4
4	Options.....	5
5	Dimensional drawings	6
6	Centre of gravity	9
7	Piping diagrams	12
8	Wiring diagrams	15
	Wiring Diagrams - Single Phase	15
9	Sound data	17
	Sound Pressure Spectrum	17

1 Features

- Unique range of single and multi BS boxes for flexible and fast design
- Major reduction in installation time thanks to wide range, compact size and light weight multi BS boxes
- Up to 70% smaller and 66% lighter than previous series
- Faster installation thanks to a reduced number of brazing points and wiring
- All indoor units connectable to one BS box
- Less inspection ports needed compared to installing single BS boxes
- Up to 16kW capacity available per port
- Connect up to 250 class unit (28kW) by combining 2 ports
- No limit on unused ports allowing phased installation
- Faster installation thanks to open port connection
- Allows multi tenant applications
- Connectable to REYQ-T, RQCEQ-P3 and RWEYQ-T8 heat recovery units



1

2 Specifications

2-1 Technical Specifications					BS4Q14AV1B	BS6Q14AV1B	BS8Q14AV1B	BS10Q14AV1B	BS12Q14AV1B	BS16Q14AV1B			
Maximum number of connectable indoor units					20	30	40	50	60	64			
Maximum number of connectable indoor units per branch					5								
Number of branches					4	6	8	10	12	16			
Maximum capacity index of connectable indoor units					400	600	750						
Maximum capacity index of connectable indoor units per branch					140								
Dimensions	Unit	Height/Width/Depth	mm		298/370/430	298/580/430		298/820/430		298/1,060/430			
Weight	Unit				kg	17.0	24.0	26.0	35.0	38.0	50.0		
Casing	Material				Galvanised steel plate								
Piping connections	Outdoor unit	Liquid	OD	mm	9.5	12.7	12.7 / 15.9 (1)		15.9	15.9 / 19.1 (1)		19.1	
		Gas	OD	mm	22.2 / 19.1 (1)		28.6 / 22.2 (1)		28.6		28.6 / 34.9 (1)		34.9
		Discharge gas	OD	mm	19.1 / 15.9 (1)		19.1 / 22.2 (1)		19.1 / 22.2 (1) / 28.6 (1)		28.6		
	Indoor unit	Liquid	OD	mm	6.4 (2) / 9.5 (3)								
		Gas	OD	mm	12.7 (2) / 15.9 (3)								
Sound absorbing thermal insulation					Urethane foam, polyethylene foam								
PED					art. 4.3								
MCA (Minimum Circuit Amps)					A	-	-	-	-	-	-		

Standard Accessories : Accessory pipe; Quantity : 1;

Standard Accessories : Clamps; Quantity : 1;

Standard Accessories : Insulation tube; Quantity : 1;

Standard Accessories : Metal clamp for drain hose; Quantity : 1;

Standard Accessories : Sealing material; Quantity : 1;

Standard Accessories : Stopper pipes; Quantity : 1;

Standard Accessories : Insulation tube for stopper pipes; Quantity : 1;

2-2 Electrical Specifications					BS4Q14AV1B	BS6Q14AV1B	BS8Q14AV1B	BS10Q14AV1B	BS12Q14AV1B	BS16Q14AV1B
Power supply	Phase				1~					
	Frequency			Hz	50					
	Voltage			V	220-440					
MCA (Minimum Circuit Amps)					A	-	-	-	-	-

Notes

(1) Diameter when using the attached reducer. If the joint does not fit, a reducer is requested (field supply).

(2) When connecting indoor units smaller or equal to 50 class (no need to cut the outlet pipe)

(3) When connecting indoor units larger or equal to 63 class (the outlet pipe needs to be cut)

Insulators are necessary (field supply) for the triple piping side

Maximum allowable voltage range variation between phases is 2%.

MCA/MFA: $MCA = 1.25 \times FLA$

$MFA \leq 4 \times FLA$

Next lower standard fuse rating minimum 15A

Select wire size based on the value of MCA

Voltage range: units are suitable for use on electrical systems where voltage supplied to unit terminal is not below or above listed range limits.

Instead of a fuse, use a circuit breaker

3 Safety device settings

3 - 1 Safety Device Settings

3

BS-Q14AV1B

MODEL	Safety devices
	PC board fuse
BS4Q14A	250V 3.15A
BS6Q14A	250V 3.15A
BS8Q14A	250V 3.15A
BS10Q14A	250V 3.15A
BS12Q14A	250V 3.15A
BS16Q14A	250V 3.15A

4D086060

4 Options

4 - 1 Options

BS-Q14AV1B

Option name	BS4Q14AV1B	BS6Q14AV1B	BS8Q14AV1B	BS10Q14AV1B	BS12Q14AV1B	BS16Q14AV1B
Closed pipe kit	KHFP26A100C					
Joint kit	KHRP26A250T					
Quiet kit	KDDN26A4	KDDN26A8		KDDN26A12		KDDN26A16
External control adapter for outdoor units	-					
Adapter for multi tenant	-					

NOTES

1. Revision mark should be te latest.

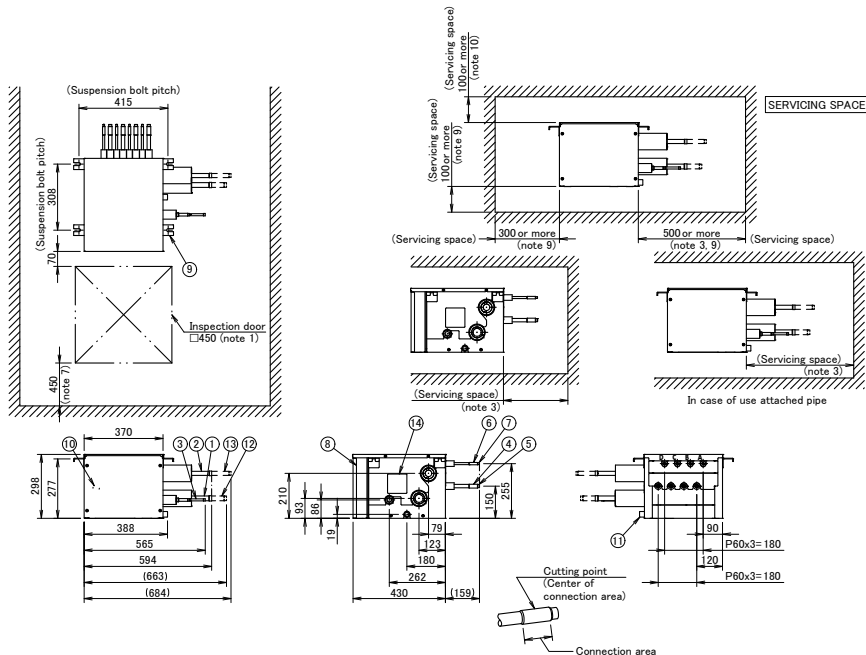
3D087639B

5 Dimensional drawings

5 - 1 Dimensional Drawings

5

BS4Q14AV1B



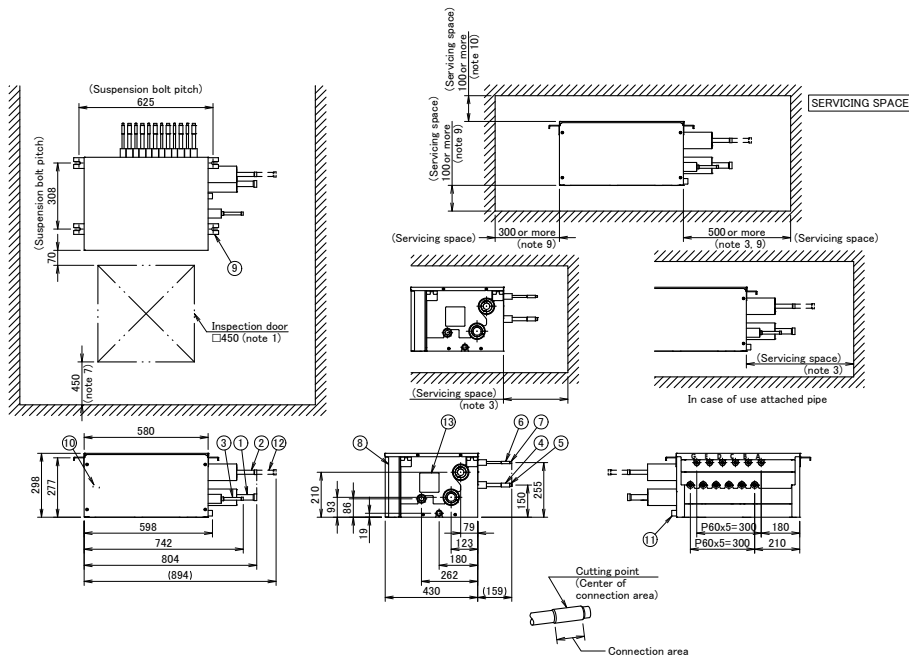
NOTES:

- BE SURE TO INSTALL AN INSPECTION DOOR AT ELECTRIC BOX SIDE. ANOTHER DOOR IS NECESSARY TO UNLOAD THE PRODUCT.
- INSTALL THE BS BOX ON A LOCATION WHERE THE REFRIGERANT NOISE CANNOT DISTURB THE ROOM OCCUPANTS.
 - TO AVOID THAT REFRIGERANT NOISE DISTURBS THE PEOPLE IN THE ROOM, KEEP AT LEAST 5m PIPING BETWEEN THE OCCUPIED ROOM AND THE BS BOX.
 - IF THERE IS NO FALSE CEILING AT THE ROOM, PLEASE ADD SOUND INSULATION AROUND THE PIPING BETWEEN BS BOX AND INDOOR UNIT, OR KEEP MUCH LONGER LENGTH BETWEEN BS BOX AND OCCUPIED ROOM.
- OCCUPY THE SPACE WHICH IS POSSIBLE TO INSTALL FIELD PIPES.
- IN CASE OF CONNECTION WITH A 20"50 TYPE INDOOR UNIT, THERE IS NO NEED TO CUT AND CONNECT AS IT IS. IN CASE OF OTHERS, CUT THE OUTLET PIPE AND CONNECT TO THE CONNECTING PIPE. REFER TO FIGURE ABOVE.
- REDUCER MAY BE REQUIRED (FIELD SUPPLY) IF JOINT DIAMETER DOES NOT SUIT ON THE TRIPLE PIPING SIDE.
- INSULATORS ARE NECESSARY (FIELD SUPPLY) FOR THE TRIPLE PIPING SIDE.
- THIS SPACE IS A SPACE TO KEEP A TOP PANEL WHEN SERVICING.
- INSTALL IT IN A SPACE WHICH CAN BE SECURED DOWNWARDS SLOPE OF 1/100 OR MORE.
- IT IS A SPACE FOR REMOVING THE DRAIN PAN.
- THIS IS A SPACE FOR REMOVING A TOP PANEL WHEN SERVICING.

NUMBER	PART NAME	REMARK
1	OUTDOOR UNIT SUCTION GAS PIPE CONNECTION PORT (NOTE 5, 6)	Ø22.2mm BRAZING CONNECTION
2	OUTDOOR UNIT HP/LP GAS PIPE CONNECTION PORT (NOTE 5, 6)	Ø19.1mm BRAZING CONNECTION
3	OUTDOOR UNIT LIQUID PIPE CONNECTION PORT (NOTE 5, 6)	Ø9.5mm BRAZING CONNECTION
4	INDOOR UNIT GAS PIPE CONNECTION PORT (NOTE 4)	Ø15.9mm BRAZING CONNECTION
5	INDOOR UNIT GAS PIPE CONNECTION PORT (NOTE 4)	Ø12.7mm BRAZING CONNECTION
6	INDOOR UNIT LIQUID PIPE CONNECTION PORT (NOTE 4)	Ø9.5mm BRAZING CONNECTION
7	INDOOR UNIT LIQUID PIPE CONNECTION PORT (NOTE 4)	Ø6.4mm BRAZING CONNECTION
8	ELECTRIC BOX (NOTE 1)	
9	SUSPENSION BRACKETS	M8-M10
10	GROUNDING TERMINAL	M4
11	SOCKET FOR DRAIN	VP20 (O.D. Ø26mm / I.D. Ø20mm)
12	ATTACHED PIPE (NOTE 5, 6)	Ø19.1mm BRAZING CONNECTION
13	ATTACHED PIPE (NOTE 5, 6)	Ø15.9mm BRAZING CONNECTION
14	INSPECTION HOLE	

3D106407

BS6Q14AV1B



NOTES:

- BE SURE TO INSTALL AN INSPECTION DOOR AT ELECTRIC BOX SIDE. ANOTHER DOOR IS NECESSARY TO UNLOAD THE PRODUCT.
- INSTALL THE BS BOX ON A LOCATION WHERE THE REFRIGERANT NOISE CANNOT DISTURB THE ROOM OCCUPANTS.
 - TO AVOID THAT REFRIGERANT NOISE DISTURBS THE PEOPLE IN THE ROOM, KEEP AT LEAST 5m PIPING BETWEEN THE OCCUPIED ROOM AND THE BS BOX.
 - IF THERE IS NO FALSE CEILING AT THE ROOM, PLEASE ADD SOUND INSULATION AROUND THE PIPING BETWEEN BS BOX AND INDOOR UNIT, OR KEEP MUCH LONGER LENGTH BETWEEN BS BOX AND OCCUPIED ROOM.
- OCCUPY THE SPACE WHICH IS POSSIBLE TO INSTALL FIELD PIPES.
- IN CASE OF CONNECTION WITH A 20"50 TYPE INDOOR UNIT, THERE IS NO NEED TO CUT AND CONNECT AS IT IS. IN CASE OF OTHERS, CUT THE OUTLET PIPE AND CONNECT TO THE CONNECTING PIPE. REFER TO FIGURE ABOVE.
- REDUCER MAY BE REQUIRED (FIELD SUPPLY) IF JOINT DIAMETER DOES NOT SUIT ON THE TRIPLE PIPING SIDE.
- INSULATORS ARE NECESSARY (FIELD SUPPLY) FOR THE TRIPLE PIPING SIDE.
- THIS SPACE IS A SPACE TO KEEP A TOP PANEL WHEN SERVICING.
- INSTALL IT IN A SPACE WHICH CAN BE SECURED DOWNWARDS SLOPE OF 1/100 OR MORE.
- IT IS A SPACE FOR REMOVING THE DRAIN PAN.
- THIS IS A SPACE FOR REMOVING A TOP PANEL WHEN SERVICING.

NUMBER	PART NAME	REMARK
1	OUTDOOR UNIT SUCTION GAS PIPE CONNECTION PORT (NOTE 5, 6)	Ø28.6mm BRAZING CONNECTION
2	OUTDOOR UNIT HP/LP GAS PIPE CONNECTION PORT (NOTE 5, 6)	Ø19.1mm BRAZING CONNECTION
3	OUTDOOR UNIT LIQUID PIPE CONNECTION PORT (NOTE 5, 6)	Ø12.7mm BRAZING CONNECTION
4	INDOOR UNIT GAS PIPE CONNECTION PORT (NOTE 4)	Ø15.9mm BRAZING CONNECTION
5	INDOOR UNIT GAS PIPE CONNECTION PORT (NOTE 4)	Ø12.7mm BRAZING CONNECTION
6	INDOOR UNIT LIQUID PIPE CONNECTION PORT (NOTE 4)	Ø9.5mm BRAZING CONNECTION
7	INDOOR UNIT LIQUID PIPE CONNECTION PORT (NOTE 4)	Ø6.4mm BRAZING CONNECTION
8	ELECTRIC BOX (NOTE 1)	
9	SUSPENSION BRACKETS	M8-M10
10	GROUNDING TERMINAL	M4
11	SOCKET FOR DRAIN	VP20 (O.D. Ø26mm / I.D. Ø20mm)
12	ATTACHED PIPE (NOTE 5, 6)	Ø22.2mm BRAZING CONNECTION
13	INSPECTION HOLE	

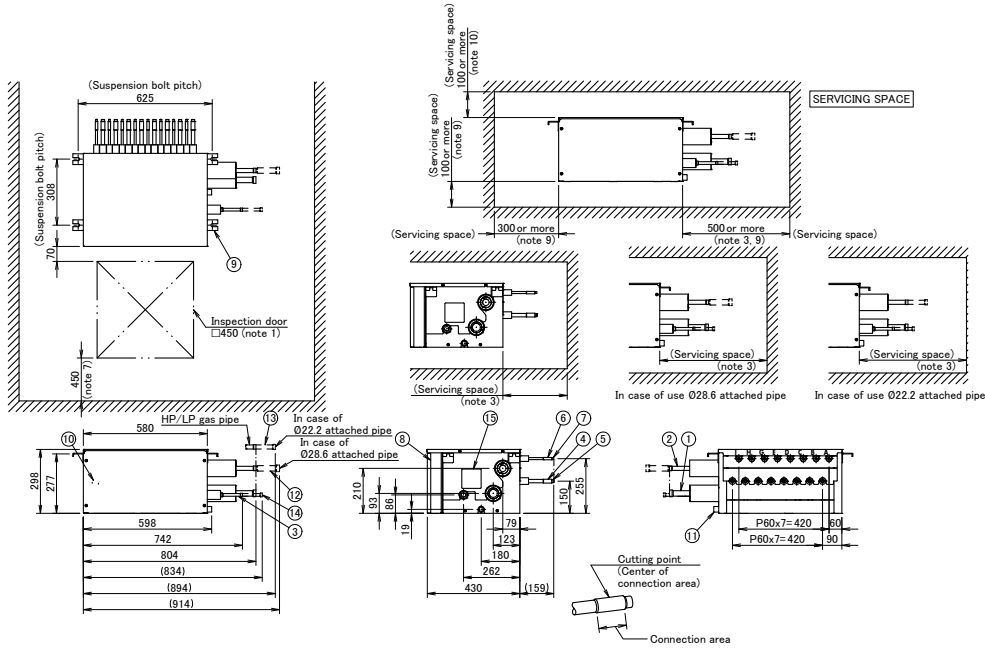
3D106408

6

5 Dimensional drawings

5 - 1 Dimensional Drawings

BS8Q14AV1B

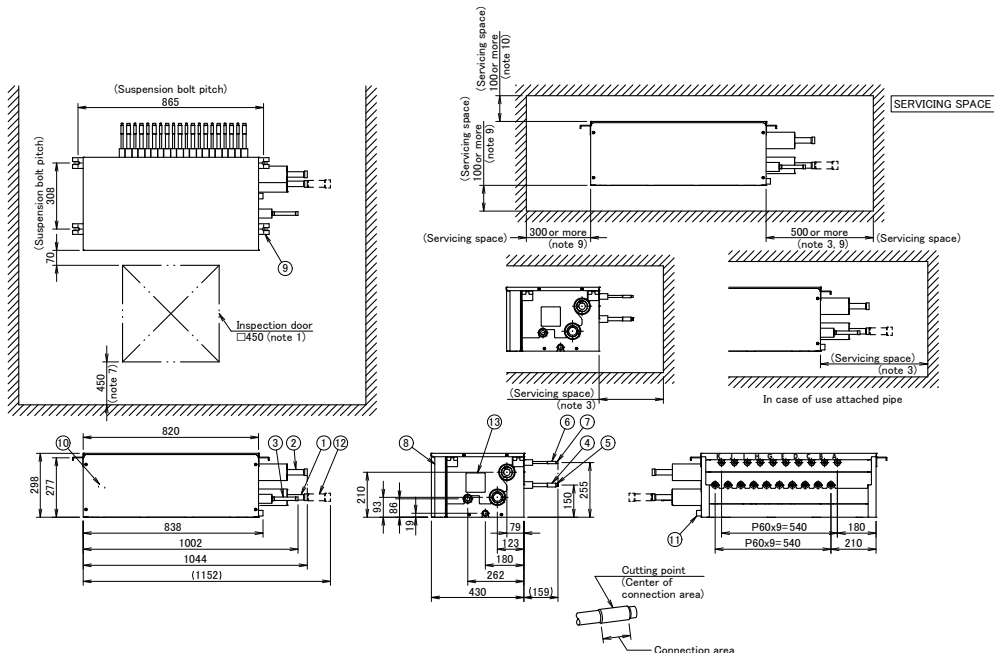


- NOTES:
- BE SURE TO INSTALL AN INSPECTION DOOR AT ELECTRIC BOX SIDE. ANOTHER DOOR IS NECESSARY TO UNLOAD THE PRODUCT.
 - INSTALL THE BS BOX ON A LOCATION WHERE THE REFRIGERANT NOISE CANNOT DISTURB THE ROOM OCCUPANTS.
 - TO AVOID THAT REFRIGERANT NOISE DISTURBS THE PEOPLE IN THE ROOM, KEEP AT LEAST 5m PIPING BETWEEN THE OCCUPIED ROOM AND THE BS BOX.
 - IF THERE IS NO FALSE CEILING AT THE ROOM, PLEASE ADD SOUND INSULATION AROUND THE PIPING BETWEEN BS BOX AND INDOOR UNIT, OR KEEP MUCH LONGER LENGTH BETWEEN BS BOX AND OCCUPIED ROOM.
 - OCCUPY THE SPACE WHICH IS POSSIBLE TO INSTALL FIELD PIPES.
 - IN CASE OF CONNECTION WITH A 20.50 TYPE INDOOR UNIT, THERE IS NO NEED TO CUT AND CONNECT AS IT IS. IN CASE OF OTHERS, CUT THE OUTLET PIPE AND CONNECT TO THE CONNECTING PIPE. REFER TO FIGURE ABOVE.
 - REDUCER MAY BE REQUIRED (FIELD SUPPLY), IF JOINT DIAMETER DOES NOT SUIT ON THE TRIPLE PIPING SIDE.
 - INSULATORS ARE NECESSARY (FIELD SUPPLY) FOR THE TRIPLE PIPING SIDE.
 - THIS SPACE IS A SPACE TO KEEP A TOP PANEL WHEN SERVICING.
 - INSTALL IT IN A SPACE WHICH CAN BE SECURED DOWNWARDS SLOPE OF 1/100 OR MORE.
 - IT IS A SPACE FOR REMOVING THE DRAIN PAN.
 - THIS IS A SPACE FOR REMOVING A TOP PANEL WHEN SERVICING.

NUMBER	PART NAME	REMARK
1	OUTDOOR UNIT SUCTION GAS PIPE CONNECTION PORT (NOTE 5, 6)	φ28.6mm BRAZING CONNECTION
2	OUTDOOR UNIT HP/LP GAS PIPE CONNECTION PORT (NOTE 5, 6)	φ19.1mm BRAZING CONNECTION
3	OUTDOOR UNIT LIQUID PIPE CONNECTION PORT (NOTE 5, 6)	φ12.7mm BRAZING CONNECTION
4	INDOOR UNIT GAS PIPE CONNECTION PORT (NOTE 4)	φ15.9mm BRAZING CONNECTION
5	INDOOR UNIT GAS PIPE CONNECTION PORT (NOTE 4)	φ12.7mm BRAZING CONNECTION
6	INDOOR UNIT LIQUID PIPE CONNECTION PORT (NOTE 4)	φ9.5mm BRAZING CONNECTION
7	INDOOR UNIT LIQUID PIPE CONNECTION PORT (NOTE 4)	φ6.4mm BRAZING CONNECTION
8	ELECTRIC BOX (NOTE 1)	
9	SUSPENSION BRACKETS	M8-M10
10	GROUNDING TERMINAL	M4
11	SOCKET FOR DRAIN	VP20 (O.D. φ25mm / I.D. φ20mm)
12	ATTACHED PIPE (NOTE 5, 6)	φ28.6mm BRAZING CONNECTION
13	ATTACHED PIPE (NOTE 5, 6)	φ12.7mm BRAZING CONNECTION
14	ATTACHED PIPE (NOTE 5, 6)	φ15.9mm BRAZING CONNECTION
15	INSPECTION HOLE	

3D106409

BS10Q14AV1B



- NOTES:
- BE SURE TO INSTALL AN INSPECTION DOOR AT ELECTRIC BOX SIDE. ANOTHER DOOR IS NECESSARY TO UNLOAD THE PRODUCT.
 - INSTALL THE BS BOX ON A LOCATION WHERE THE REFRIGERANT NOISE CANNOT DISTURB THE ROOM OCCUPANTS.
 - TO AVOID THAT REFRIGERANT NOISE DISTURBS THE PEOPLE IN THE ROOM, KEEP AT LEAST 5m PIPING BETWEEN THE OCCUPIED ROOM AND THE BS BOX.
 - IF THERE IS NO FALSE CEILING AT THE ROOM, PLEASE ADD SOUND INSULATION AROUND THE PIPING BETWEEN BS BOX AND INDOOR UNIT, OR KEEP MUCH LONGER LENGTH BETWEEN BS BOX AND OCCUPIED ROOM.
 - OCCUPY THE SPACE WHICH IS POSSIBLE TO INSTALL FIELD PIPES.
 - IN CASE OF CONNECTION WITH A 20.50 TYPE INDOOR UNIT, THERE IS NO NEED TO CUT AND CONNECT AS IT IS. IN CASE OF OTHERS, CUT THE OUTLET PIPE AND CONNECT TO THE CONNECTING PIPE. REFER TO FIGURE ABOVE.
 - REDUCER MAY BE REQUIRED (FIELD SUPPLY), IF JOINT DIAMETER DOES NOT SUIT ON THE TRIPLE PIPING SIDE.
 - INSULATORS ARE NECESSARY (FIELD SUPPLY) FOR THE TRIPLE PIPING SIDE.
 - THIS SPACE IS A SPACE TO KEEP A TOP PANEL WHEN SERVICING.
 - INSTALL IT IN A SPACE WHICH CAN BE SECURED DOWNWARDS SLOPE OF 1/100 OR MORE.
 - IT IS A SPACE FOR REMOVING THE DRAIN PAN.
 - THIS IS A SPACE FOR REMOVING A TOP PANEL WHEN SERVICING.

NUMBER	PART NAME	REMARK
1	OUTDOOR UNIT SUCTION GAS PIPE CONNECTION PORT (NOTE 5, 6)	φ28.6mm BRAZING CONNECTION
2	OUTDOOR UNIT HP/LP GAS PIPE CONNECTION PORT (NOTE 5, 6)	φ19.1mm BRAZING CONNECTION
3	OUTDOOR UNIT LIQUID PIPE CONNECTION PORT (NOTE 5, 6)	φ12.7mm BRAZING CONNECTION
4	INDOOR UNIT GAS PIPE CONNECTION PORT (NOTE 4)	φ15.9mm BRAZING CONNECTION
5	INDOOR UNIT GAS PIPE CONNECTION PORT (NOTE 4)	φ12.7mm BRAZING CONNECTION
6	INDOOR UNIT LIQUID PIPE CONNECTION PORT (NOTE 4)	φ9.5mm BRAZING CONNECTION
7	INDOOR UNIT LIQUID PIPE CONNECTION PORT (NOTE 4)	φ6.4mm BRAZING CONNECTION
8	ELECTRIC BOX (NOTE 1)	
9	SUSPENSION BRACKETS	M8-M10
10	GROUNDING TERMINAL	M4
11	SOCKET FOR DRAIN	VP20 (O.D. φ25mm / I.D. φ20mm)
12	ATTACHED PIPE (NOTE 5, 6)	φ28.6mm BRAZING CONNECTION
13	ATTACHED PIPE (NOTE 5, 6)	φ12.7mm BRAZING CONNECTION

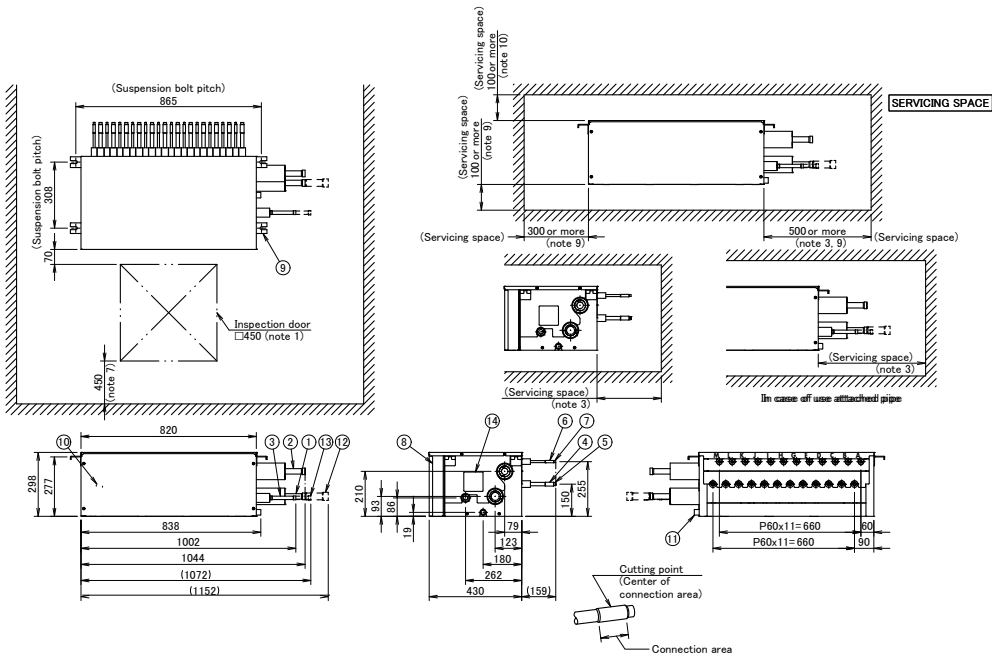
3D106410

5 Dimensional drawings

5 - 1 Dimensional Drawings

5

BS12Q14AV1B



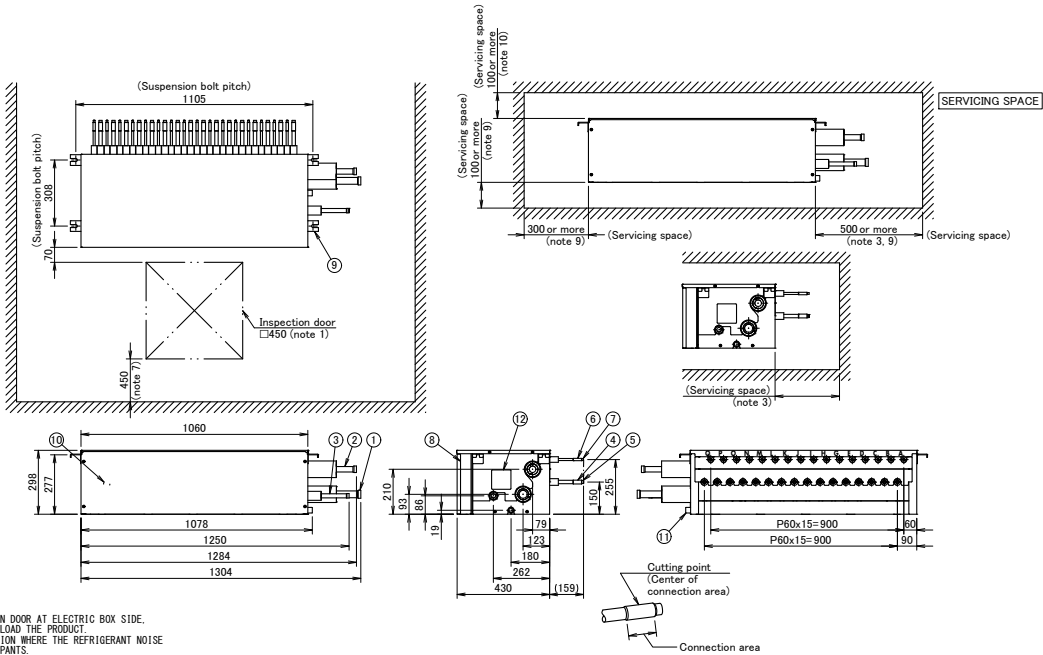
NOTES:

- BE SURE TO INSTALL AN INSPECTION DOOR AT ELECTRIC BOX SIDE. ANOTHER DOOR IS NECESSARY TO UNLOAD THE PRODUCT.
- INSTALL THE BS BOX ON A LOCATION WHERE THE REFRIGERANT NOISE CANNOT DISTURB THE ROOM OCCUPANTS.
 - TO AVOID THAT REFRIGERANT NOISE DISTURBS THE PEOPLE IN THE ROOM, KEEP AT LEAST 5m PIPING BETWEEN THE OCCUPIED ROOM AND THE BS BOX.
 - IF THERE IS NO FALSE CEILING AT THE ROOM, PLEASE ADD SOUND INSULATION AROUND THE PIPING BETWEEN BS BOX AND INDOOR UNIT, OR KEEP MUCH LONGER LENGTH BETWEEN BS BOX AND OCCUPIED ROOM.
- OCCUPY THE SPACE WHICH IS POSSIBLE TO INSTALL FIELD PIPES.
- IN CASE OF CONNECTION WITH A 20/30 TYPE INDOOR UNIT, THERE IS NO NEED TO CUT AND CONNECT AS IT IS.
- IN CASE OF OTHERS, CUT THE OUTLET PIPE AND CONNECT TO THE CONNECTING PIPE. REFER TO FIGURE ABOVE.
- REDUCER MAY BE REQUIRED (FIELD SUPPLY) IF JOINT DIAMETER DOES NOT SUIT ON THE TRIPLE PIPING SIDE.
- INSULATORS ARE NECESSARY (FIELD SUPPLY) FOR THE TRIPLE PIPING SIDE.
- THIS SPACE IS A SPACE TO KEEP A TOP PANEL WHEN SERVICING.
- INSTALL IT IN A SPACE WHICH CAN BE SECURED DOWNWARDS SLOPE OF 1/100 OR MORE.
- IT IS A SPACE FOR REMOVING THE DRAIN PAN.
- THIS IS A SPACE FOR REMOVING A TOP PANEL WHEN SERVICING.

NUMBER	PART NAME	REMARK
1	OUTDOOR UNIT SUCTION GAS PIPE CONNECTION PORT (NOTE 5, 9)	Ø28.6mm BRAZING CONNECTION
2	OUTDOOR UNIT H/P/LP GAS PIPE CONNECTION PORT (NOTE 5, 9)	Ø28.6mm BRAZING CONNECTION
3	OUTDOOR UNIT LIQUID PIPE CONNECTION PORT (NOTE 5, 9)	Ø15.9mm BRAZING CONNECTION
4	INDOOR UNIT GAS PIPE CONNECTION PORT (NOTE 4)	Ø15.9mm BRAZING CONNECTION
5	INDOOR UNIT GAS PIPE CONNECTION PORT (NOTE 4)	Ø12.7mm BRAZING CONNECTION
6	INDOOR UNIT LIQUID PIPE CONNECTION PORT (NOTE 4)	Ø9.5mm BRAZING CONNECTION
7	INDOOR UNIT LIQUID PIPE CONNECTION PORT (NOTE 4)	Ø6.4mm BRAZING CONNECTION
8	ELECTRIC BOX (NOTE 1)	
9	SUSPENSION BRACKETS	M8-M10
10	GROUNDING TERMINAL	M8
11	SOCKET FOR DRAIN	VF20 (O.D. Ø28mm / I.D. Ø20mm)
12	ATTACHED PIPE (NOTE 5, 9)	Ø24.9mm BRAZING CONNECTION
13	ATTACHED PIPE (NOTE 5, 9)	Ø19.3mm BRAZING CONNECTION
14	INSPECTION HOLE	

3D106411

BS16Q14AV1B



NOTES:

- BE SURE TO INSTALL AN INSPECTION DOOR AT ELECTRIC BOX SIDE. ANOTHER DOOR IS NECESSARY TO UNLOAD THE PRODUCT.
- INSTALL THE BS BOX ON A LOCATION WHERE THE REFRIGERANT NOISE CANNOT DISTURB THE ROOM OCCUPANTS.
 - TO AVOID THAT REFRIGERANT NOISE DISTURBS THE PEOPLE IN THE ROOM, KEEP AT LEAST 5m PIPING BETWEEN THE OCCUPIED ROOM AND THE BS BOX.
 - IF THERE IS NO FALSE CEILING AT THE ROOM, PLEASE ADD SOUND INSULATION AROUND THE PIPING BETWEEN BS BOX AND INDOOR UNIT, OR KEEP MUCH LONGER LENGTH BETWEEN BS BOX AND OCCUPIED ROOM.
- OCCUPY THE SPACE WHICH IS POSSIBLE TO INSTALL FIELD PIPES.
- IN CASE OF CONNECTION WITH A 20/30 TYPE INDOOR UNIT, THERE IS NO NEED TO CUT AND CONNECT AS IT IS.
- IN CASE OF OTHERS, CUT THE OUTLET PIPE AND CONNECT TO THE CONNECTING PIPE. REFER TO FIGURE ABOVE.
- REDUCER MAY BE REQUIRED (FIELD SUPPLY) IF JOINT DIAMETER DOES NOT SUIT ON THE TRIPLE PIPING SIDE.
- INSULATORS ARE NECESSARY (FIELD SUPPLY) FOR THE TRIPLE PIPING SIDE.
- THIS SPACE IS A SPACE TO KEEP A TOP PANEL WHEN SERVICING.
- INSTALL IT IN A SPACE WHICH CAN BE SECURED DOWNWARDS SLOPE OF 1/100 OR MORE.
- IT IS A SPACE FOR REMOVING THE DRAIN PAN.
- THIS IS A SPACE FOR REMOVING A TOP PANEL WHEN SERVICING.

NUMBER	PART NAME	REMARK
1	OUTDOOR UNIT SUCTION GAS PIPE CONNECTION PORT (NOTE 5, 9)	Ø24.9mm BRAZING CONNECTION
2	OUTDOOR UNIT H/P/LP GAS PIPE CONNECTION PORT (NOTE 5, 9)	Ø28.6mm BRAZING CONNECTION
3	OUTDOOR UNIT LIQUID PIPE CONNECTION PORT (NOTE 5, 9)	Ø19.3mm BRAZING CONNECTION
4	INDOOR UNIT GAS PIPE CONNECTION PORT (NOTE 4)	Ø15.9mm BRAZING CONNECTION
5	INDOOR UNIT GAS PIPE CONNECTION PORT (NOTE 4)	Ø12.7mm BRAZING CONNECTION
6	INDOOR UNIT LIQUID PIPE CONNECTION PORT (NOTE 4)	Ø9.5mm BRAZING CONNECTION
7	INDOOR UNIT LIQUID PIPE CONNECTION PORT (NOTE 4)	Ø6.4mm BRAZING CONNECTION
8	ELECTRIC BOX (NOTE 1)	
9	SUSPENSION BRACKETS	M8-M10
10	GROUNDING TERMINAL	M8
11	SOCKET FOR DRAIN	VF20 (O.D. Ø28mm / I.D. Ø20mm)
12	INSPECTION HOLE	

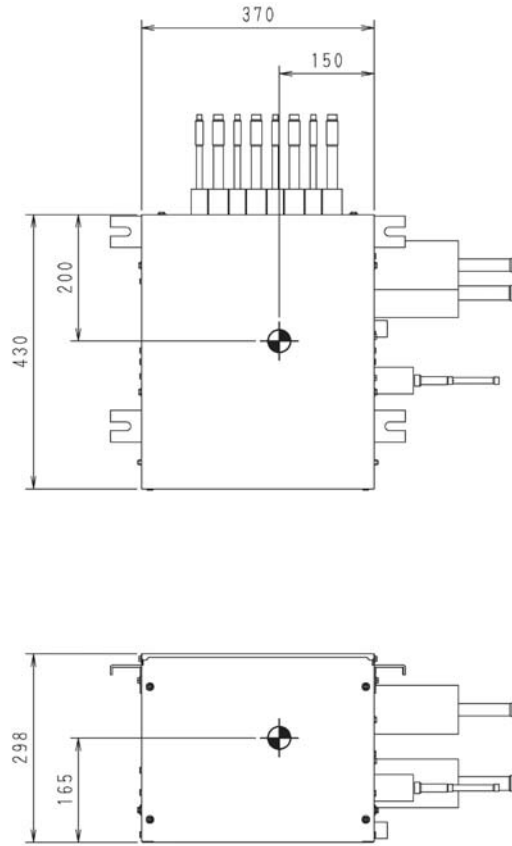
3D106412

8

6 Centre of gravity

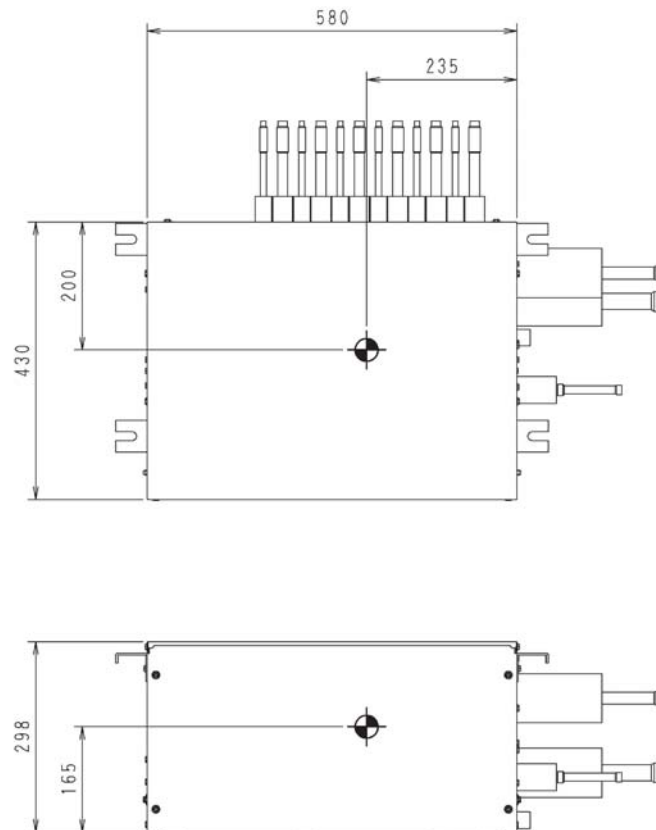
6 - 1 Centre of Gravity

BS4Q14AV1B



4D086046

BS6Q14AV1B

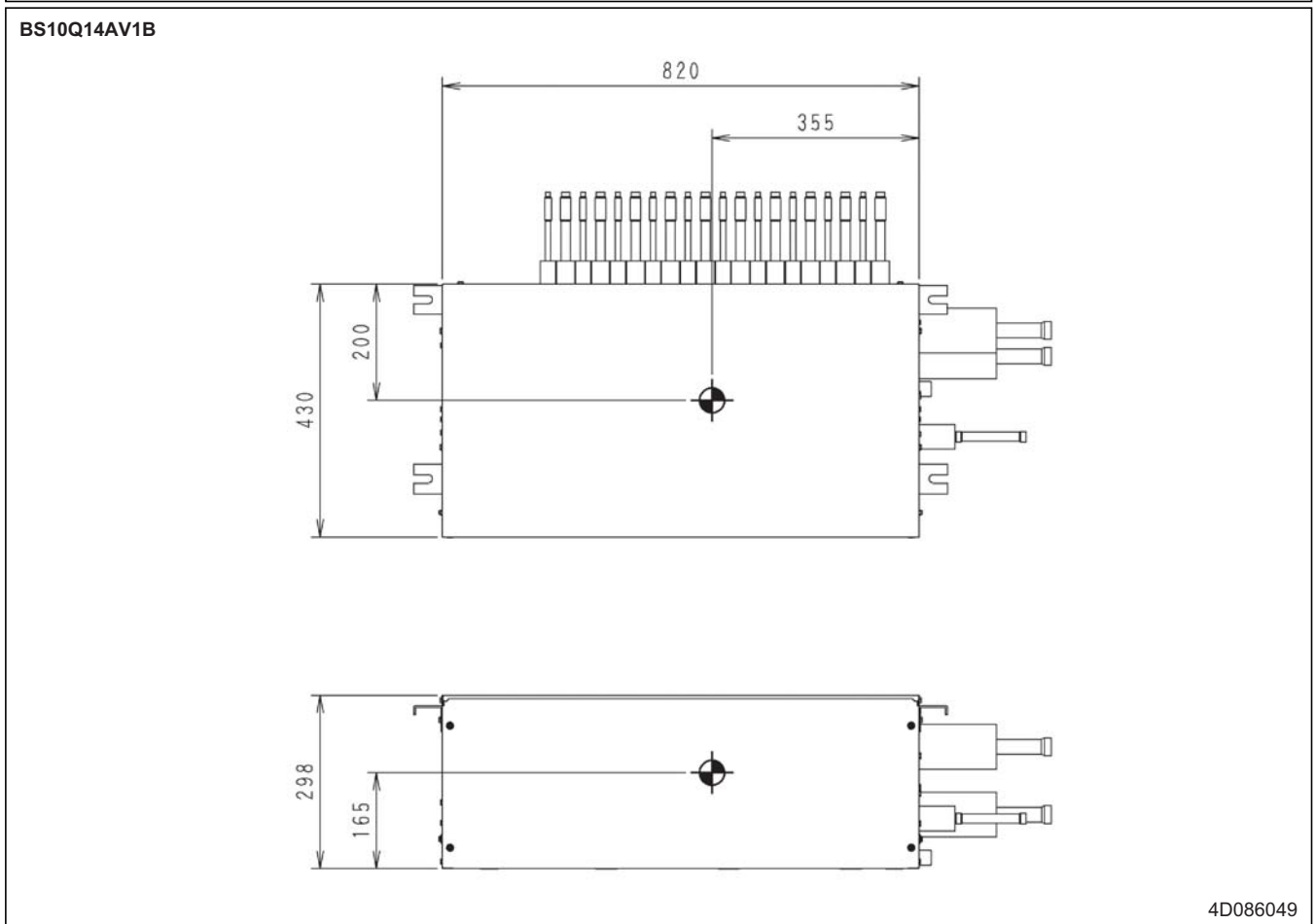
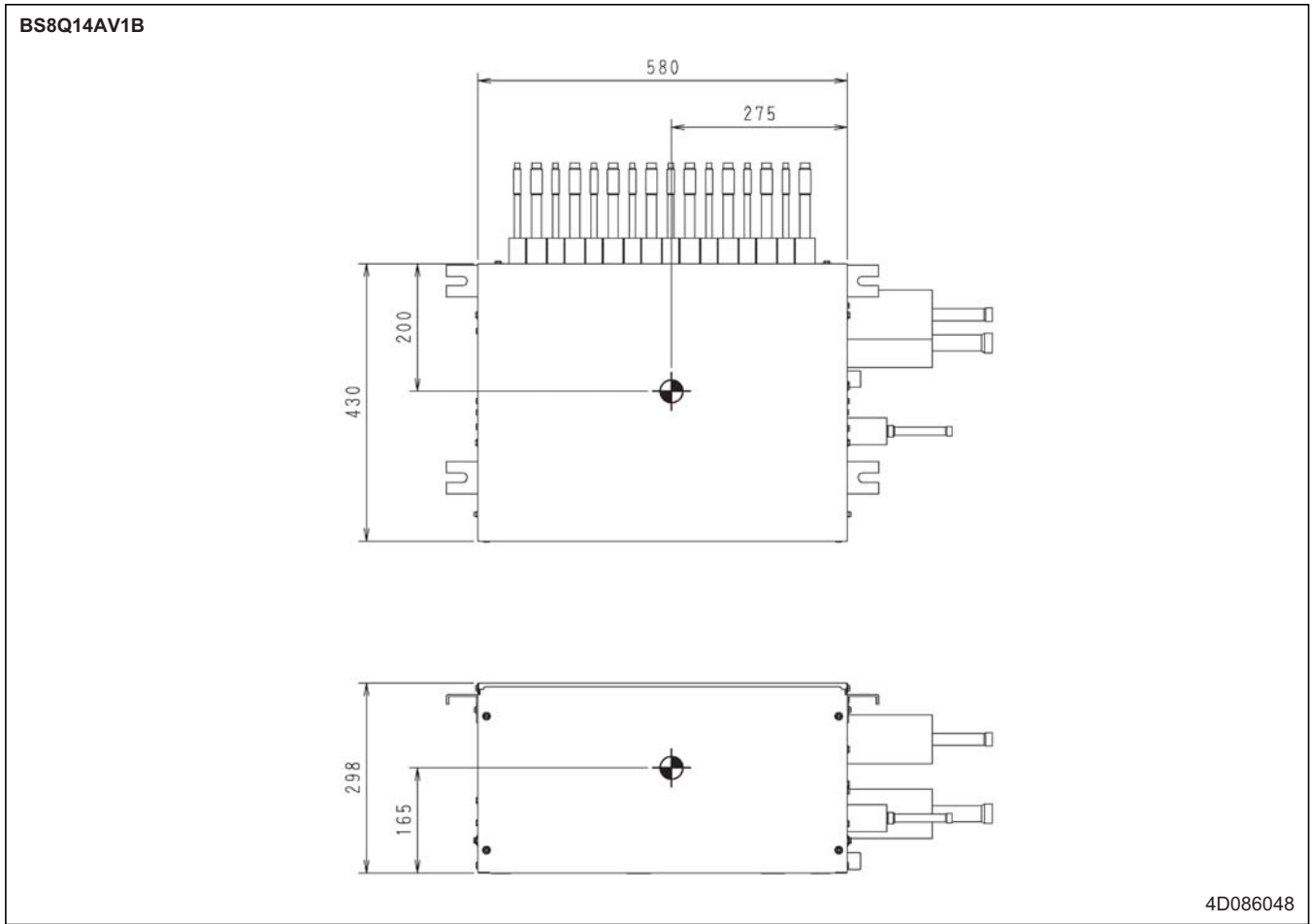


4D086047

6 Centre of gravity

6 - 1 Centre of Gravity

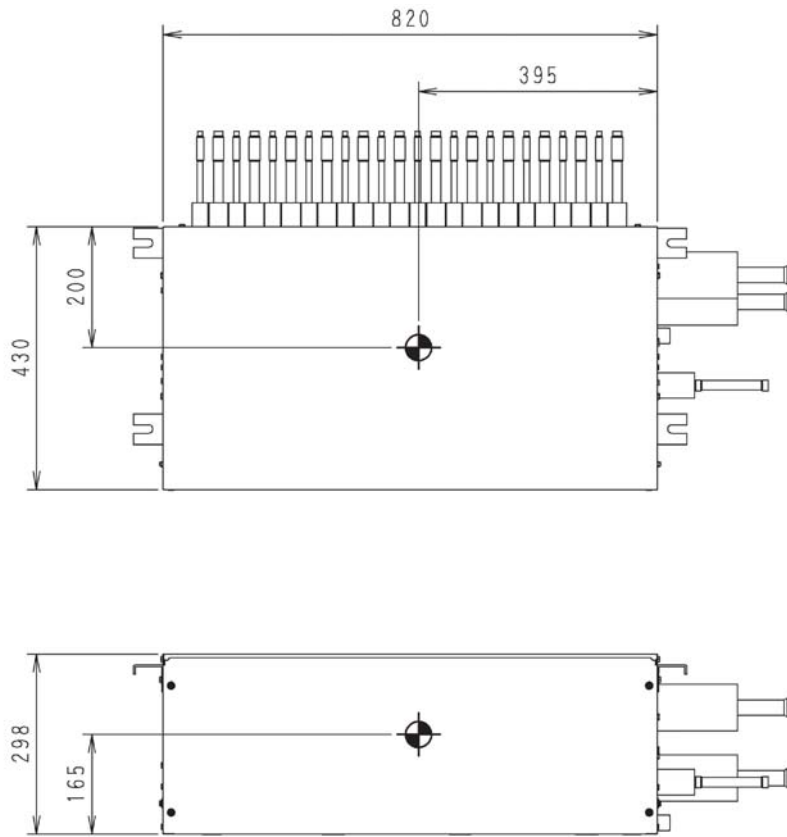
6



6 Centre of gravity

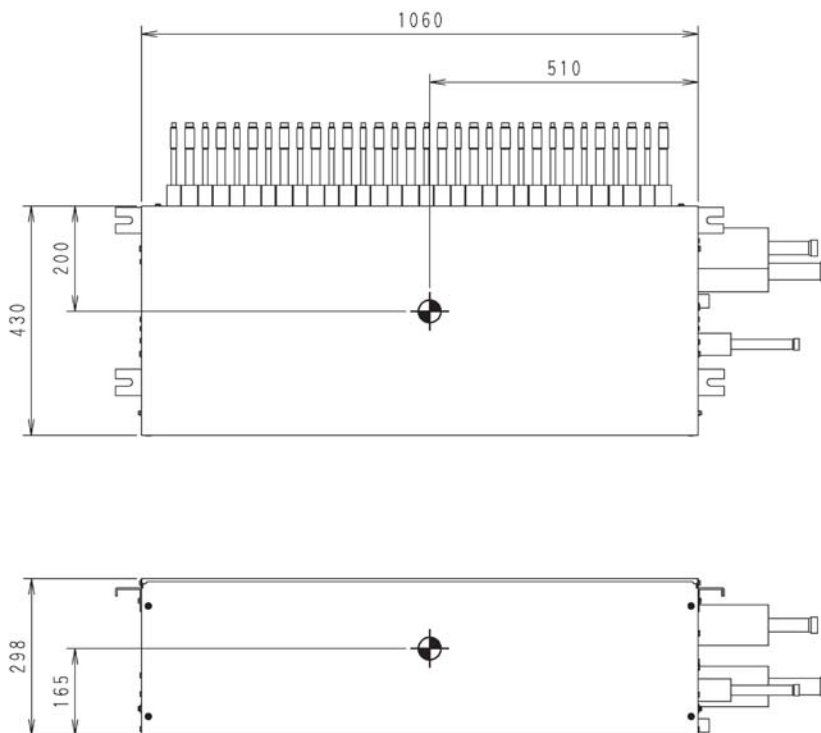
6 - 1 Centre of Gravity

BS12Q14AV1B



4D086050

BS16Q14AV1B

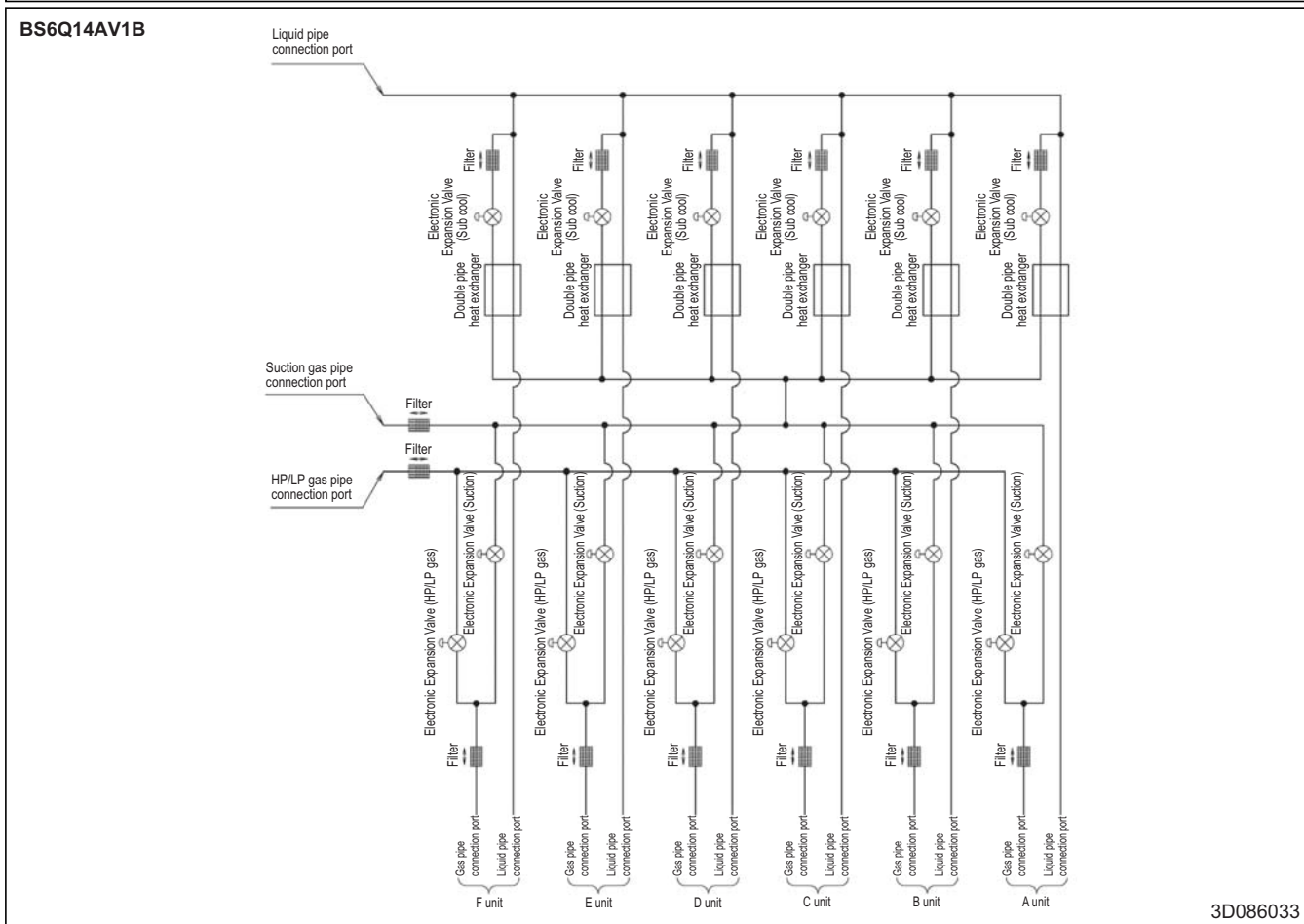
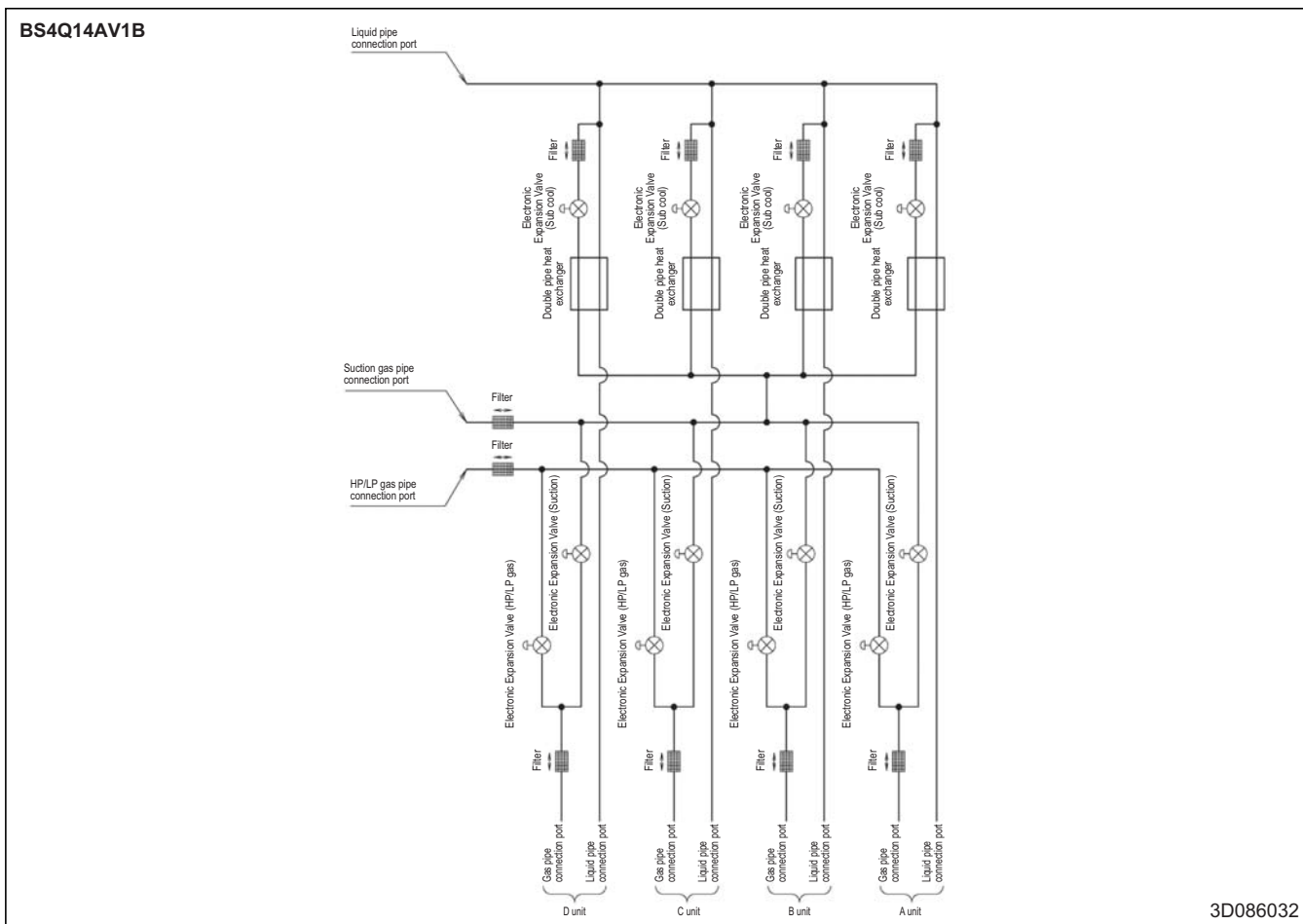


4D086051

7 Piping diagrams

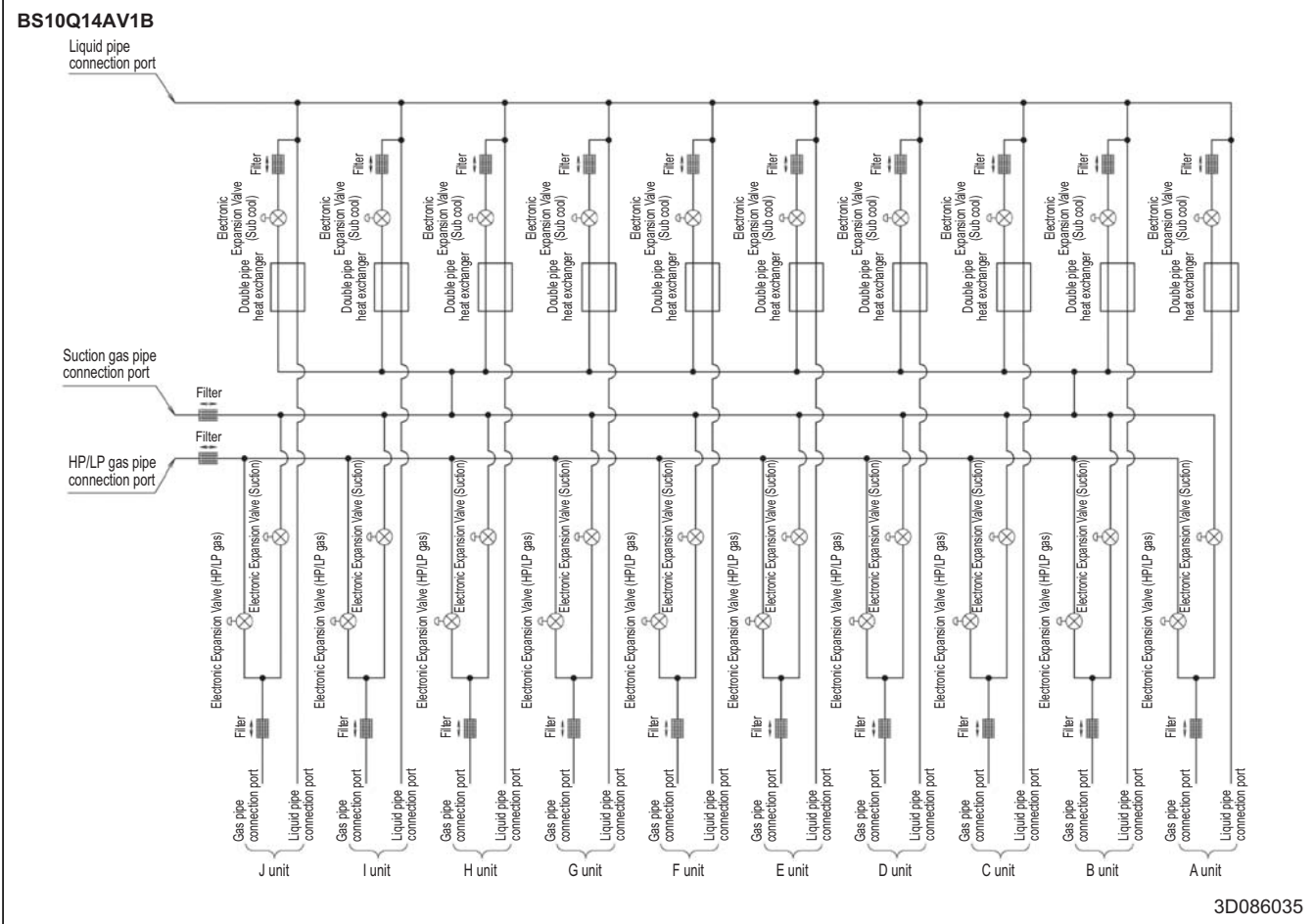
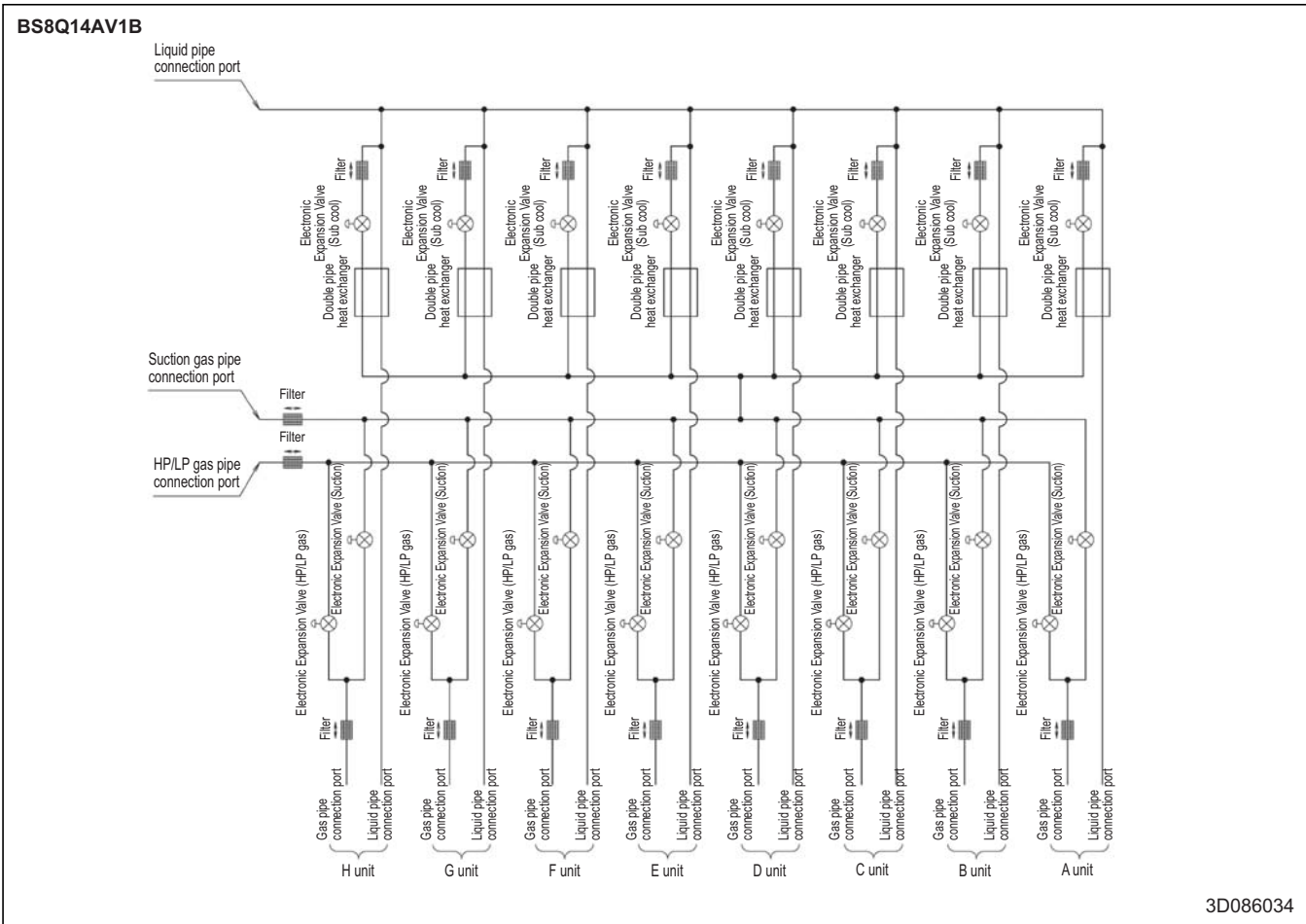
7 - 1 Piping Diagrams

7



7 Piping diagrams

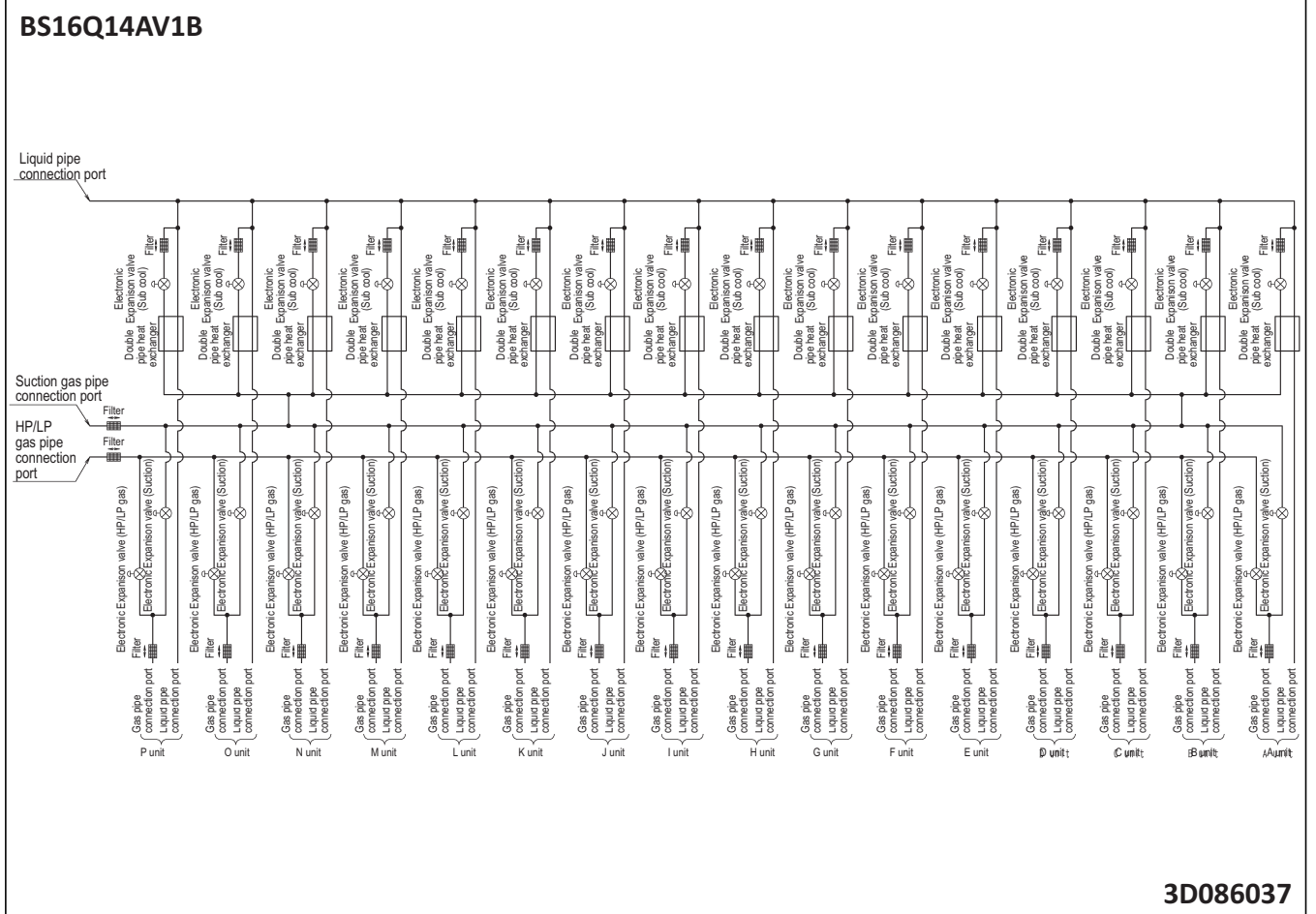
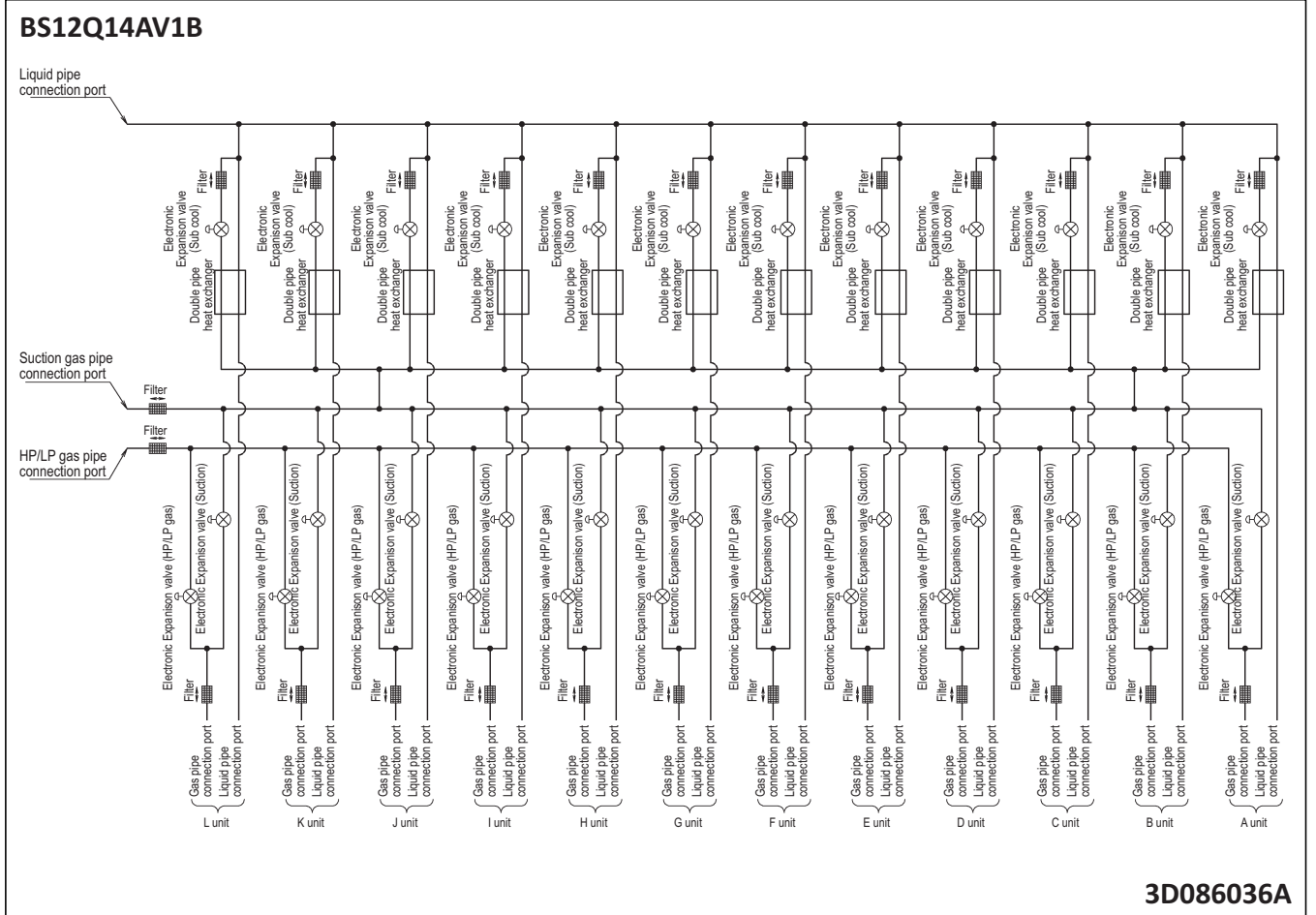
7 - 1 Piping Diagrams



7 Piping diagrams

7 - 1 Piping Diagrams

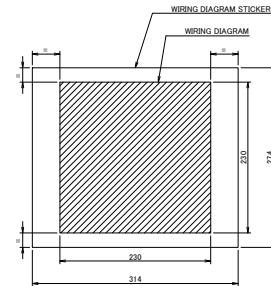
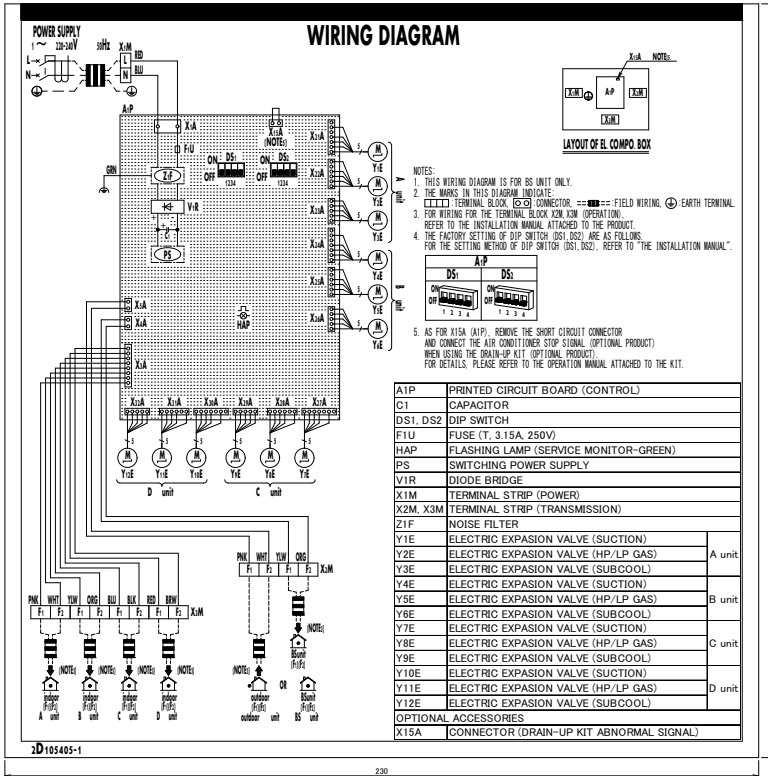
7



8 Wiring diagrams

8 - 1 Wiring Diagrams - Single Phase

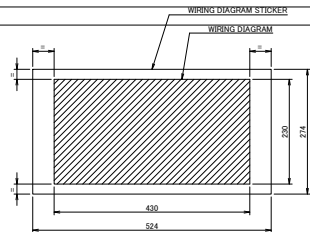
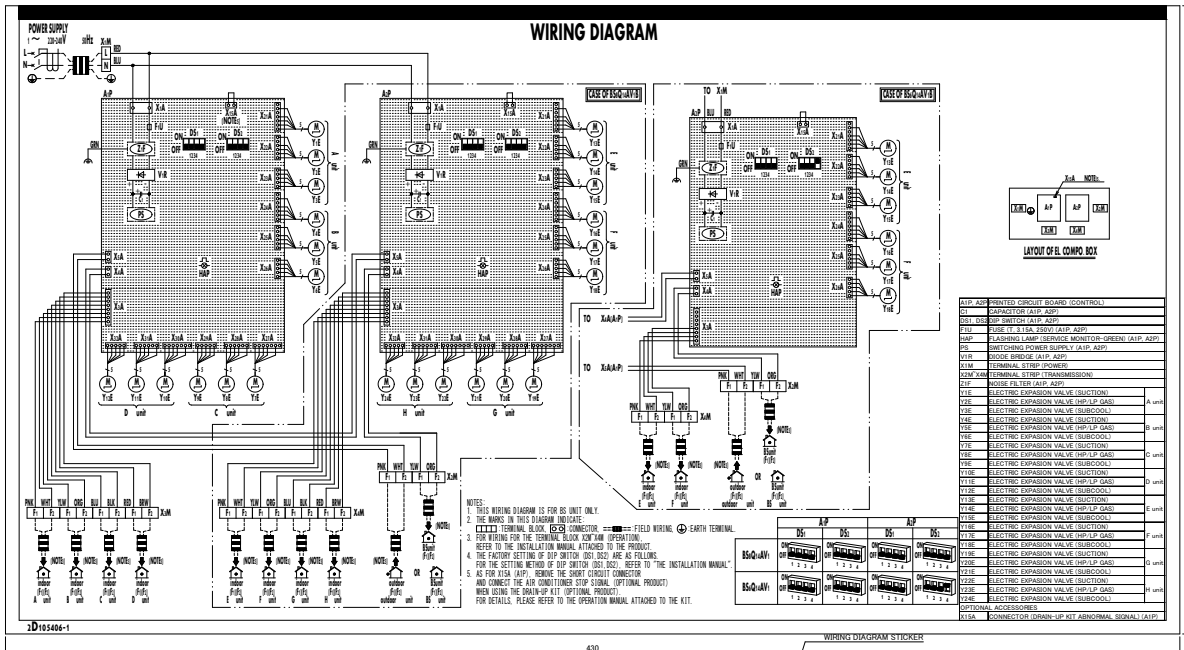
BS4Q14AV1B



- NOTES:
- LAYOUT AND LETTERSIZE = THIS DRAWING.
 - DO NOT PRINT DIMENSIONS.
 - PRINTING: OFFSET PRINTING BLACK.
 - SLITS: MAKE 2 OR 3 SLITS AT THE REAR SIDE.
 - PRINTING MUST COMPLY TO THE RUBBING TEST OF EN60335-2-40 CLAUSE 7.14.

2D105405

BS6-8Q14AV1B



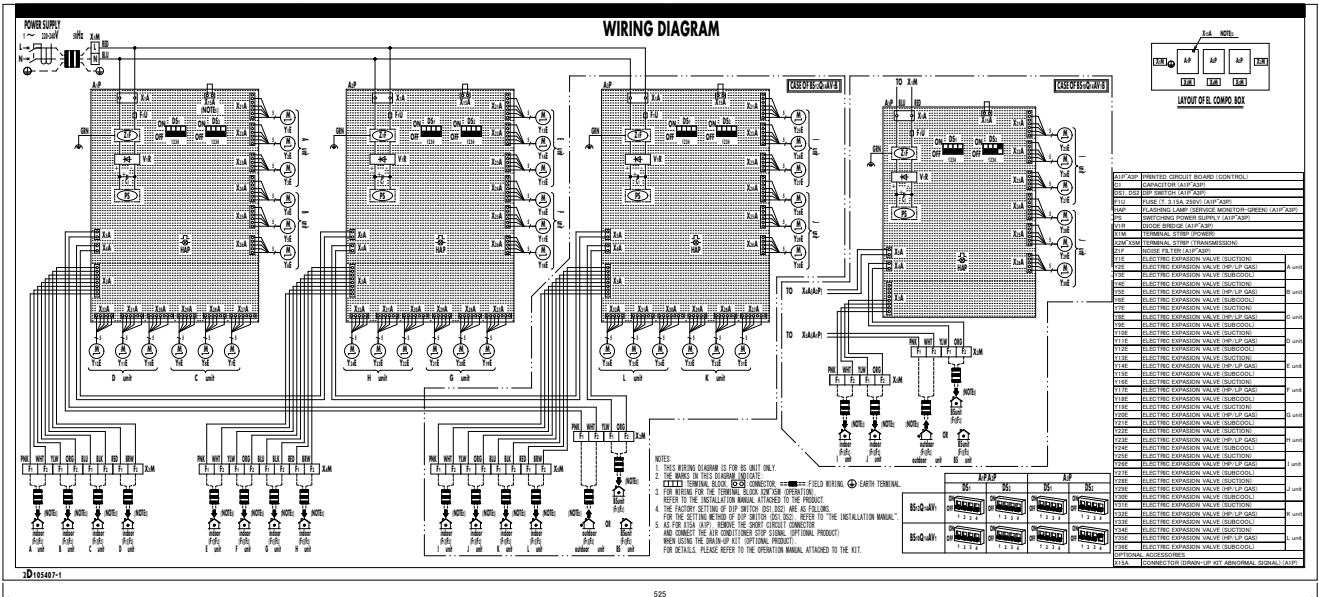
- NOTES:
- LAYOUT AND LETTERSIZE = THIS DRAWING.
 - DO NOT PRINT DIMENSIONS.
 - PRINTING: OFFSET PRINTING BLACK.
 - SLITS: MAKE 2 OR 3 SLITS AT THE REAR SIDE.
 - PRINTING MUST COMPLY TO THE RUBBING TEST OF EN60335-2-40 CLAUSE 7.14.

2D105406

8 Wiring diagrams

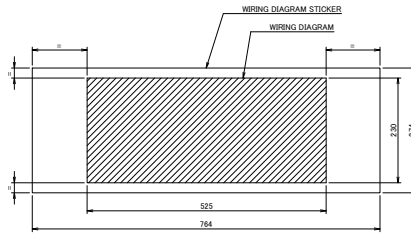
8 - 1 Wiring Diagrams - Single Phase

BS10-12Q14AV1B



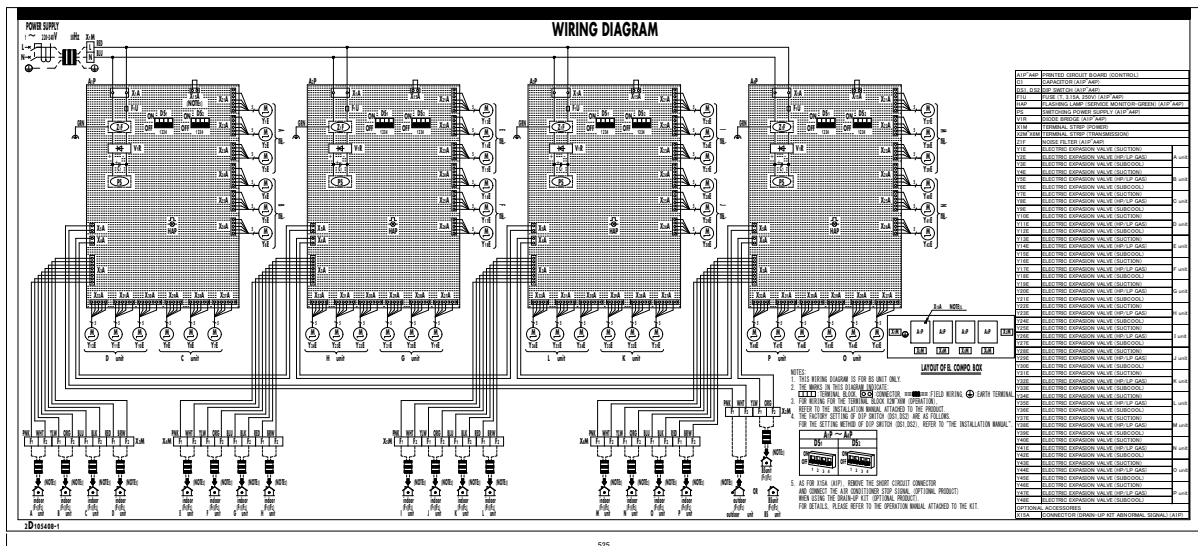
NOTES:

1. LAYOUT AND LETTERSIZE = THIS DRAWING.
2. DO NOT PRINT DIMENSIONS.
3. PRINTING: OFFSET PRINTING BLACK.
4. SLITS: MAKE 2 OR 3 SLITS AT THE REAR SIDE.
5. PRINTING MUST COMPLY TO THE RUBBING TEST OF EN60335-2-40 CLAUSE 7. 14.



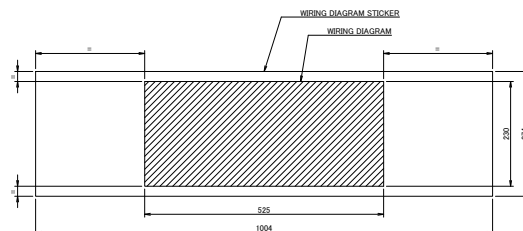
D2105407

BS16Q14AV1B



NOTES:

1. LAYOUT AND LETTERSIZE = THIS DRAWING.
2. DO NOT PRINT DIMENSIONS.
3. PRINTING: OFFSET PRINTING BLACK.
4. SLITS: MAKE 2 OR 3 SLITS AT THE REAR SIDE.
5. PRINTING MUST COMPLY TO THE RUBBING TEST OF EN60335-2-40 CLAUSE 7. 14.

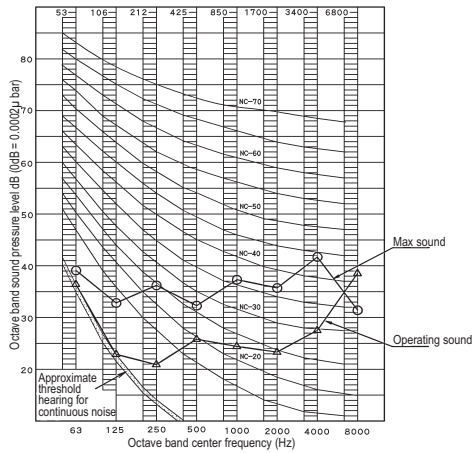


D2105408

9 Sound data

9 - 1 Sound Pressure Spectrum

BS4Q14AV1B



NOTES

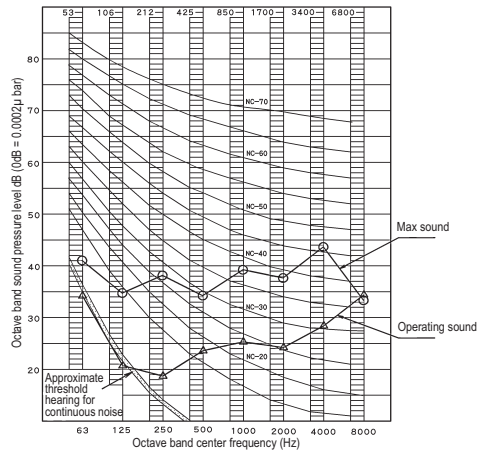
Scale	Operating sound	Max sound
A	38	45
C	39	46

- Over All (dB):
- Operating conditions:
Power source: 220-240V 50Hz
- Measuring place: Anechoic chamber (conversion value)
- The operating sound is measured in anechoic chamber, if it is measured under the actual installation conditions, it is normally over the set value due to environmental noise and sound reflection.
- Even if the indoor unit to be connected downstream of BS unit has stopped, when the system is operating, operation sound can be heard.
- The maximum sound is max value of transient sound, such as oil return and defrost, the change of cooling and heating, etc.
- Location of microphone:



4D087632A

BS6-8Q14AV1B



NOTES

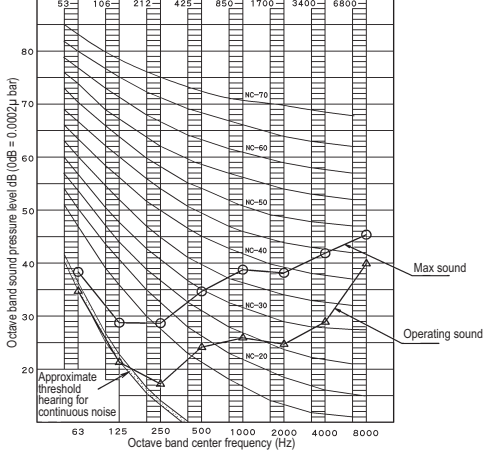
Scale	Operating sound	Max sound
A	39	47
C	39	48

- Over All (dB):
- Operating conditions:
Power source: 220-240V 50Hz
- Measuring place: Anechoic chamber (conversion value)
- The operating sound is measured in anechoic chamber, if it is measured under the actual installation conditions, it is normally over the set value due to environmental noise and sound reflection.
- Even if the indoor unit to be connected downstream of BS unit has stopped, when the system is operating, operation sound can be heard.
- The maximum sound is max value of transient sound, such as oil return and defrost, the change of cooling and heating, etc.
- Location of microphone:



4D087633A

BS10-12Q14AV1B



NOTES

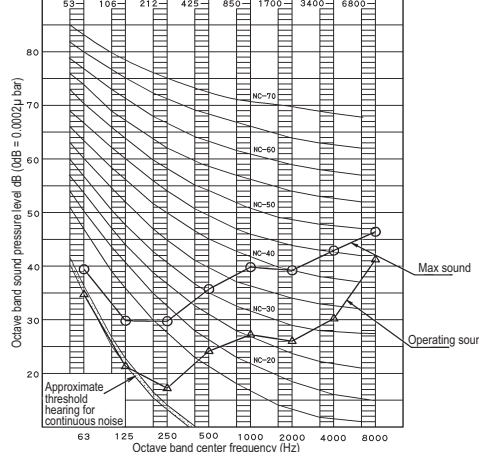
Scale	Operating sound	Max sound
A	40	48
C	40	48

- Over All (dB):
- Operating conditions:
Power source: 220-240V 50Hz
- Measuring place: Anechoic chamber (conversion value)
- The operating sound is measured in anechoic chamber, if it is measured under the actual installation conditions, it is normally over the set value due to environmental noise and sound reflection.
- Even if the indoor unit to be connected downstream of BS unit has stopped, when the system is operating, operation sound can be heard.
- The maximum sound is max value of transient sound, such as oil return and defrost, the change of cooling and heating, etc.
- Location of microphone:



4D087634A

BS16Q14AV1B



NOTES

Scale	Operating sound	Max sound
A	41	49
C	41	49

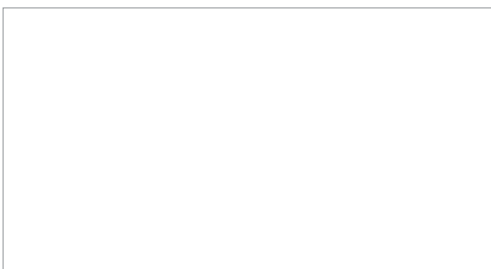
- Over All (dB):
- Operating conditions:
Power source: 220-240V 50Hz
- Measuring place: Anechoic chamber (conversion value)
- The operating sound is measured in anechoic chamber, if it is measured under the actual installation conditions, it is normally over the set value due to environmental noise and sound reflection.
- Even if the indoor unit to be connected downstream of BS unit has stopped, when the system is operating, operation sound can be heard.
- The maximum sound is max value of transient sound, such as oil return and defrost, the change of cooling and heating, etc.
- Location of microphone:



4D087635A



Daikin Europe N.V. Naamloze Vennootschap - Zandvoordestraat 300, B-8400 Oostende - Belgium - www.daikin.eu - BE 0412 120 336 - RPR Oostende



EEDEN18 03/18



The present leaflet is drawn up by way of information only and does not constitute an offer binding upon Daikin Europe N.V.. Daikin Europe N.V. has compiled the content of this leaflet to the best of its knowledge. No express or implied warranty is given for the completeness, accuracy, reliability or fitness for particular purpose of its content and the products and services presented therein. Specifications are subject to change without prior notice. Daikin Europe N.V. explicitly rejects any liability for any direct or indirect damage, in the broadest sense, arising from or related to the use and/or interpretation of this leaflet. All content is copyrighted by Daikin Europe N.V.